

## TMAX 4001



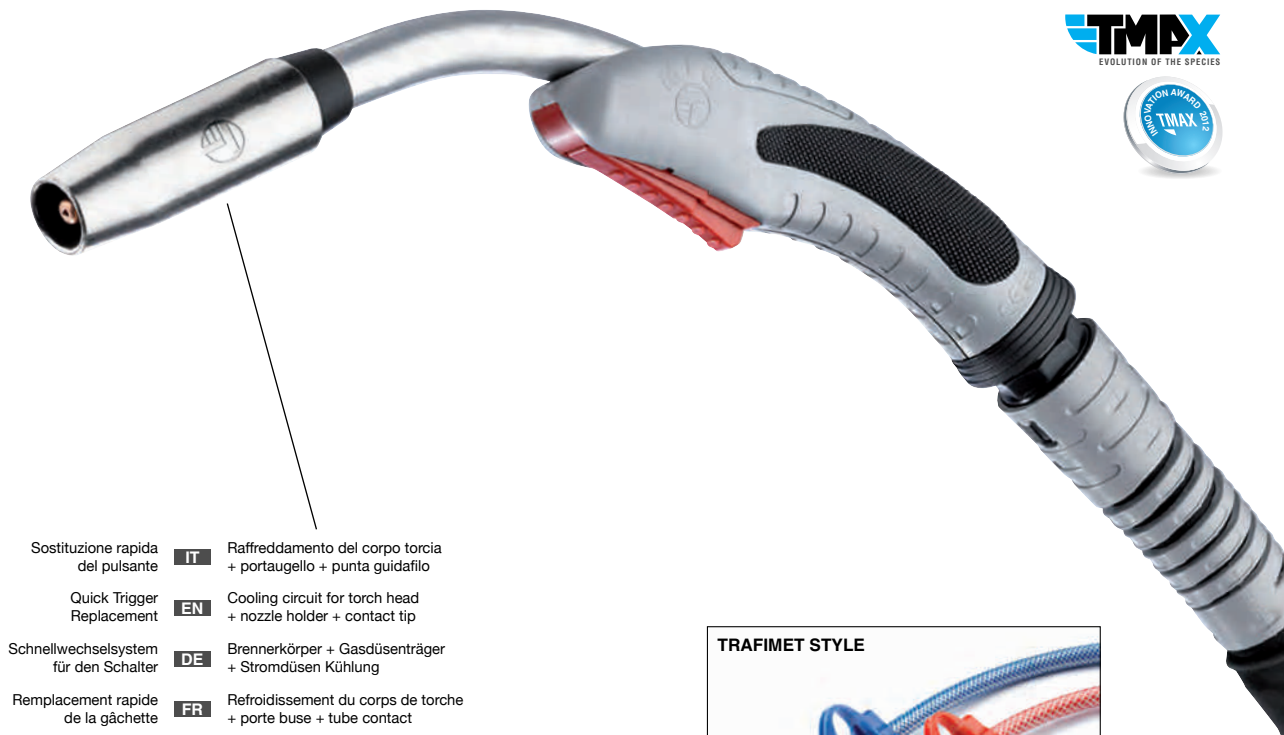
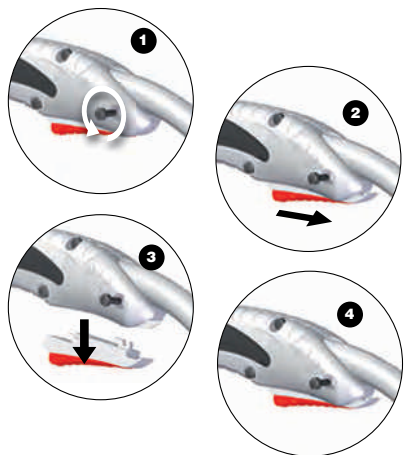
3 ± 5 m

1,3 Kg

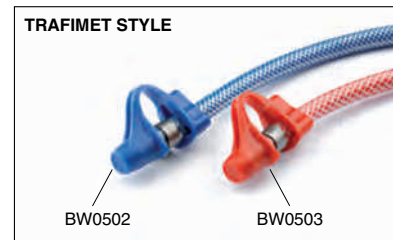
1 m

<b>V<sub>peak</sub></b>	113	<b>Ø</b>	1.0 - 1.2 - 1.4 1.6 - 2.0 - 2.4	<b>X</b>	450A CO <sub>2</sub> 400A Mix
<b>Pressure</b>	2±4 bar	<b>Flow</b>	1.6 l/min		

CODE	↔	IS
MB2423	3 m	EURO
MB2424	4 m	EURO
MB2425	5 m	EURO



- Sostituzione rapida del pulsante **IT** Raffreddamento del corpo torcia + portaguglio + punta guidafile
- Quick Trigger Replacement **EN** Cooling circuit for torch head + nozzle holder + contact tip
- Schnellwechselsystem für den Schalter **DE** Brennerkörper + Gasdüsenträger + Stromdüsen Kühlung
- Remplacement rapide de la gâchette **FR** Refroidissement du corps de torche + porte buse + tube contact
- Sustitución rápida del pulsador **ES** Refrigeración del cuerpo antorcha + porta tubo de contacto + tubo de contacto
- Kolay ve çabuk tetik değişimi. **TR** Soğutma (Torç boynu + Nozul tutucu + Kontakt meme)
- Быстрая замена курка **RU** Охлаждение головки горелки, держателя наконечника и контактного наконечника



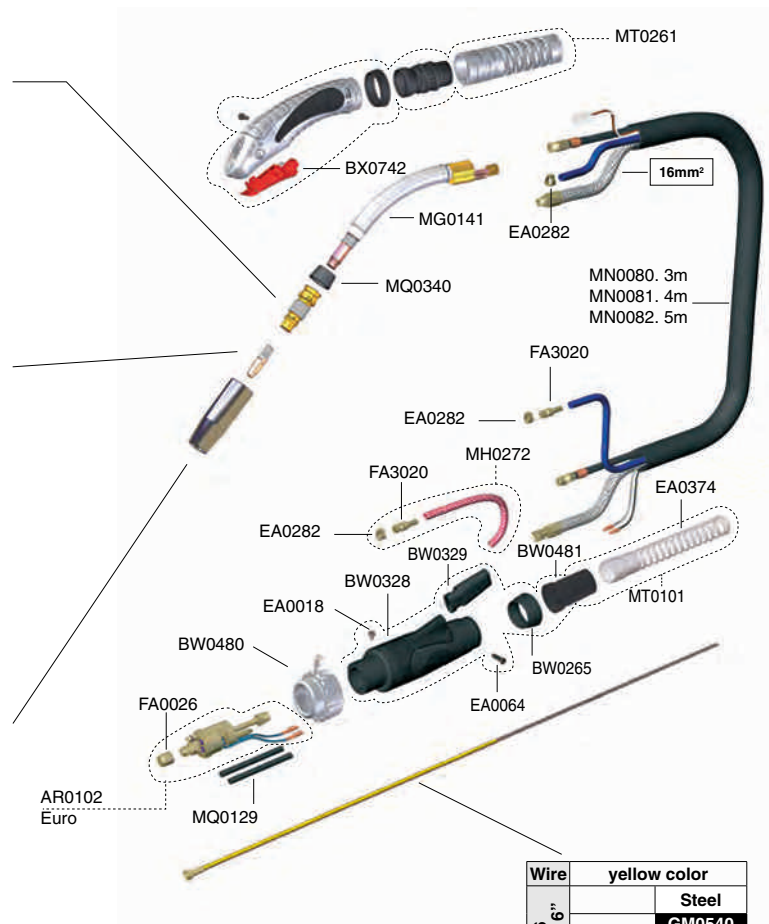
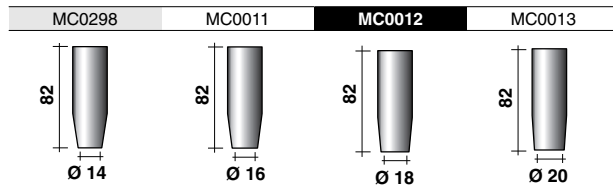
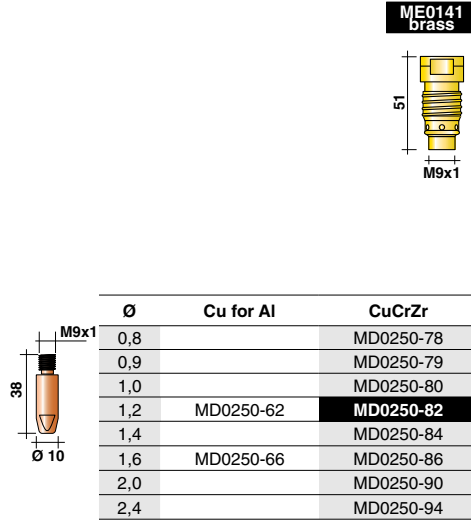
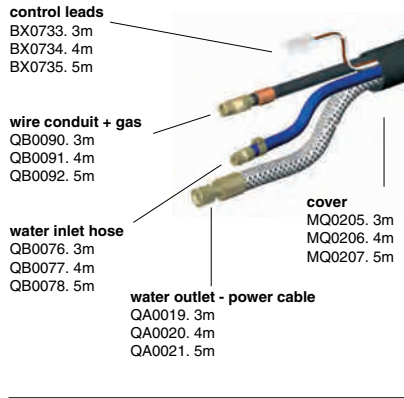
EN 60974-7



Better performances  
and protection  
for your torch



UTI000157



Wire	yellow color	
1,2 + 1,6 .045" + 1/16"	Steel	
	3 m / 10'	<b>GM0540</b> (124.0041)
	4 m / 12'	<b>GM0541</b> (124.0042)
	5 m / 16,4'	<b>GM0542</b> (124.0044)

STANDARD

(REF.)