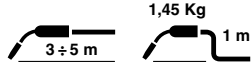


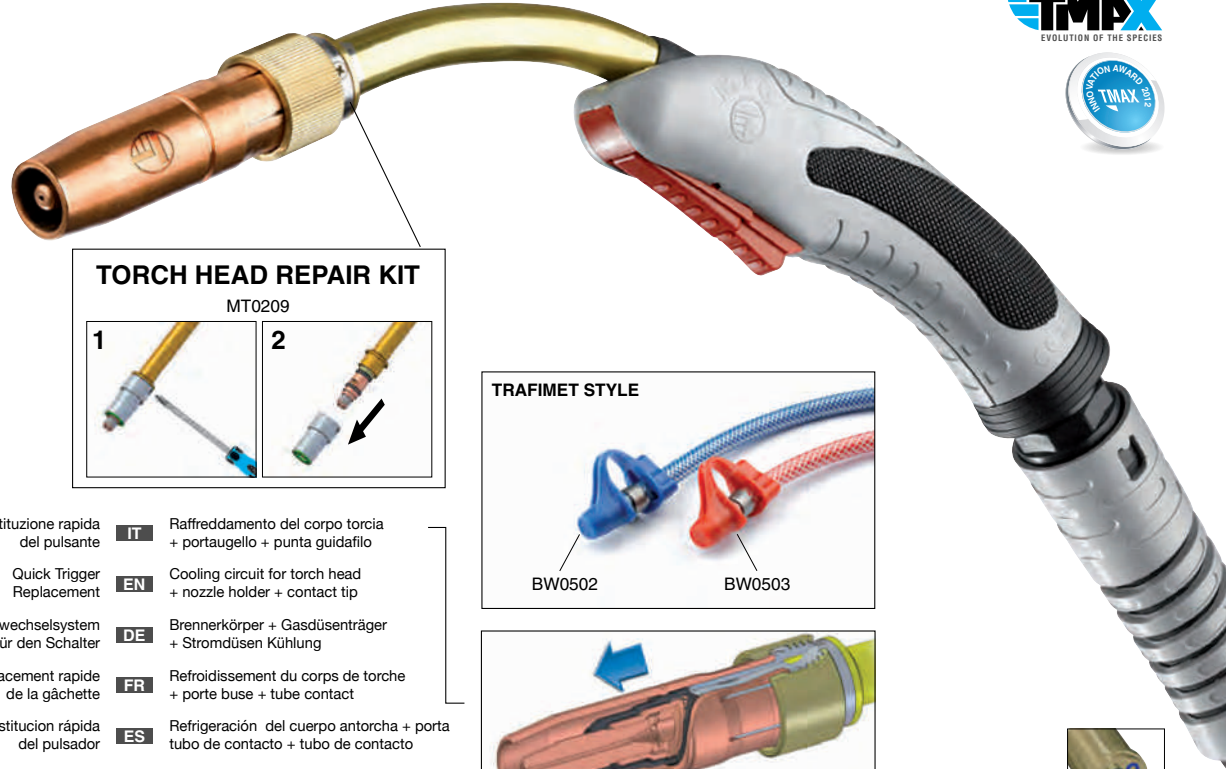
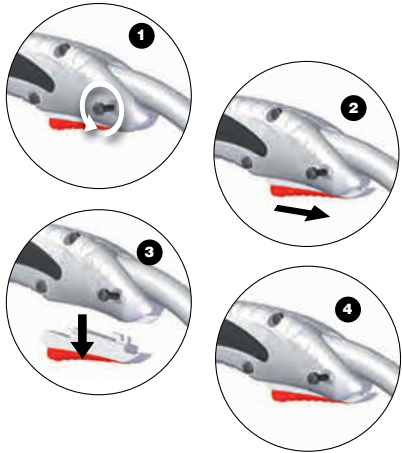
TMAX 5001



1,45 Kg

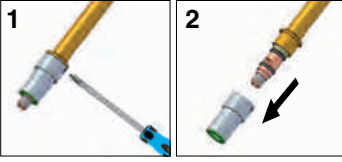
V peak	113	Ø mm	1.0 - 1.2 - 1.4 1.6 - 2.0 - 2.4	X	550A CO ₂ 500A Mix
Pressure	2÷4 bar	Flow	1.6 l/min		

CODE	↔	EURO
MB2443	3 m	EURO
MB2444	4 m	EURO
MB2445	5 m	EURO



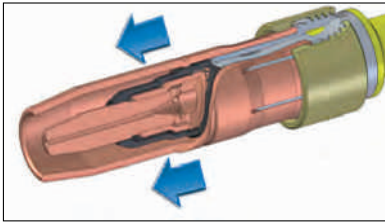
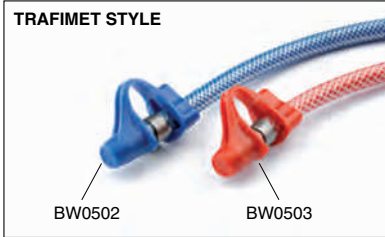
TORCH HEAD REPAIR KIT

MT0209



- | | | |
|---------------------------------------|-----------|---|
| Sostituzione rapida del pulsante | IT | Raffreddamento del corpo torcia + portaugello + punta guidafile |
| Quick Trigger Replacement | EN | Cooling circuit for torch head + nozzle holder + contact tip |
| Schnellwechselsystem für den Schalter | DE | Brennerkörper + Gasdüsenträger + Stromdüsen Kühlung |
| Remplacement rapide de la gâchette | FR | Refroidissement du corps de torche + porte buse + tube contact |
| Sustitución rápida del pulsador | ES | Refrigeración del cuerpo antorcha + porta tubo de contacto + tubo de contacto |
| Kolay ve çabuk tetik değişimi. | TR | Soğutma (Torç boynu + Nozul tutucu + Kontak meme) |
| Быстрая замена курка | RU | Охлаждение головки горелки, держателя наконечника и контактного наконечника |

TRAFIMET STYLE



EN 60974-7



Better performances
and protection
for your torch



UT1000157

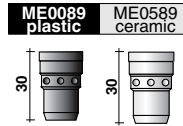
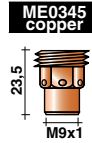
control leads
BX0733. 3m
BX0734. 4m
BX0735. 5m

wire conduit + gas
QB0090. 3m
QB0091. 4m
QB0092. 5m

water inlet hose
QB0076. 3m
QB0077. 4m
QB0078. 5m

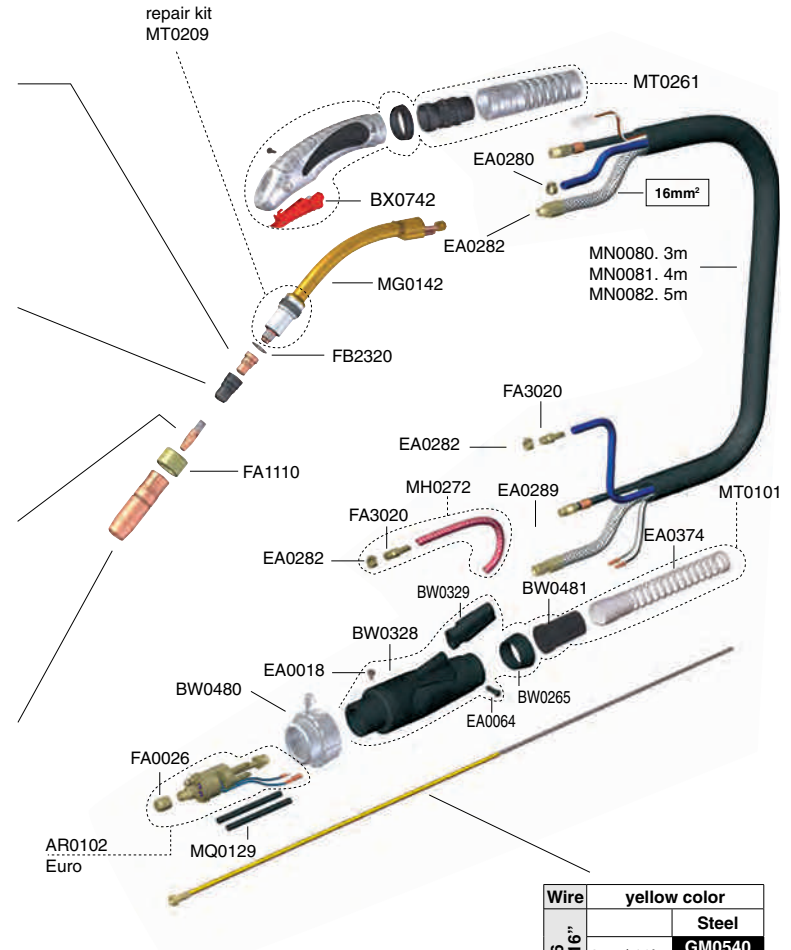
cover
MQ0205. 3m
MQ0206. 4m
MQ0207. 5m

water outlet - power cable
QA0019. 3m
QA0020. 4m
QA0021. 5m



	Ø	Cu for Al	CuCrZr
	1,0		MD0250-80
	1,2	MD0250-62	MD0250-82
	1,4		MD0250-84
	1,6	MD0250-66	MD0250-86
	2,0		MD0250-90
	2,4		MD0250-94

MC0346	MC0348	MC0345	MC0347



Wire	yellow color	
1,2 ± 1,6 .045" ± 1/16"	Steel	
	3 m / 10'	GM0540 (124.0041)
	4 m / 12'	GM0541 (124.0042)
	5 m / 16,4'	GM0542 (124.0044)

STANDARD (REF.)